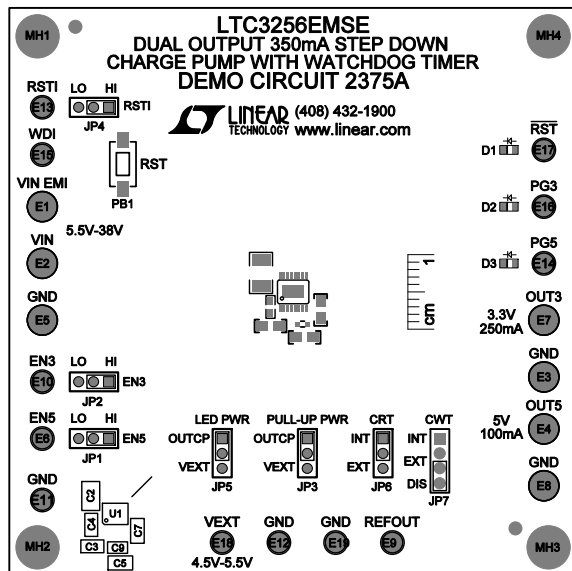


| REVISION HISTORY |     |             |      |         |
|------------------|-----|-------------|------|---------|
| ECO              | REV | DESCRIPTION | APPR | DATE    |
| -                | 3   | PRODUCTION  | MM   | 3-18-16 |

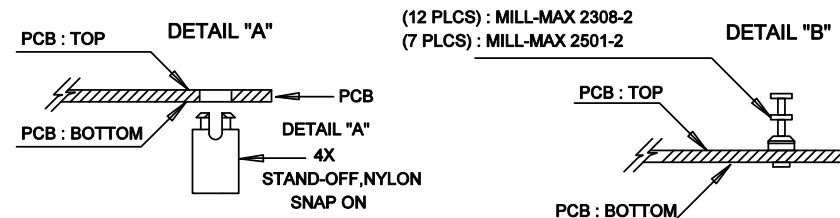
## NOTES: UNLESS OTHERWISE SPECIFIED


1. WORKMANSHIP SHALL BE IN ACCORDANCE WITH IPC-A-610, CLASS 2.
2. ASSEMBLY REFLOW PROFILE SHALL BE IN ACCORDANCE WITH J-STD-020 WITH MAXIMUM SOLDER TEMPERATURE OF 250 DEGREES CELSIUS.
3. PARTS TO OMIT WILL BE SPECIFIED ON THE BILL OF MATERIALS  
LOCATIONS OF OMITTED PARTS SHALL BE FREE OF SOLDER.  
MASK THE SOLDER STENCIL WHERE SMT PARTS ARE OMITTED.
4. INSTALL SHUNTS AS SHOWN ON ASSY DRAWING.
5. DEPANELIZE BOARDS AFTER ASSEMBLY AND ROUTE-OUT THE BREAKOUT TABS ON FOUR SIDES OF THE BOARD EDGE.
6. APPLY ASSEMBLY STAMP OR QA STAMP TO BOTTOM OF BOARD (UNSHOWY AREA).
7. INSTALL TURRETS, STAND-OFFS AND BANANA JACKS AS SHOWN BELOW:



DETAIL "A"

DETAIL "B"



| APPROVALS    |    |  <div> 1630 MCCARTHY BLVD<br/> MILPITAS, CA 95035<br/> PH: (408)432-1900<br/> www.Linear.com<br/> LTC CONFIDENTIAL-<br/> FOR CUSTOMER USE ONLY </div> |                    |      |
|--------------|----|--|--------------------|------|
| PCB DES.     | NC | TITLE: TOP ASSEMBLY DRAWING:<br>DUAL OUTPUT 350mA STEP DOWN<br>CHARGE PUMP WITH WATCHDOG TIMER   |                    |      |
| APP ENG.     | MM |  |                    |      |
|              |    | SIZE   | IC NO. LTC3256EMSE | REV. |
|              |    | N/A  | DEMO CIRCUIT 2375A | 3    |
| SCALE = NONE |    | SHT 1 of 2   |                    |      |